



## Service Information

### Air Conditioning Split

### AMD 012

8530 012 01000

Last Modification: 08/08/09

Creation Date: 03/03/09

---

<b>Spare Part List</b>	<b>2</b>
<b>Exploded View</b>	<b>4</b>
<b>Circuit Diagram</b>	<b>6</b>
<b>Technical Data</b>	<b>8</b>
<b>Error Codes</b>	<b>10</b>

---

This document is only intended for qualified technicians who are aware of the respective safety regulations.  
Subject to modifications



**Большая библиотека технической документации**

<https://splitsystema48.ru/instrukcii-po-ekspluatácii-kondicionerov.html>

**каталоги, инструкции, сервисные мануалы, схемы.**

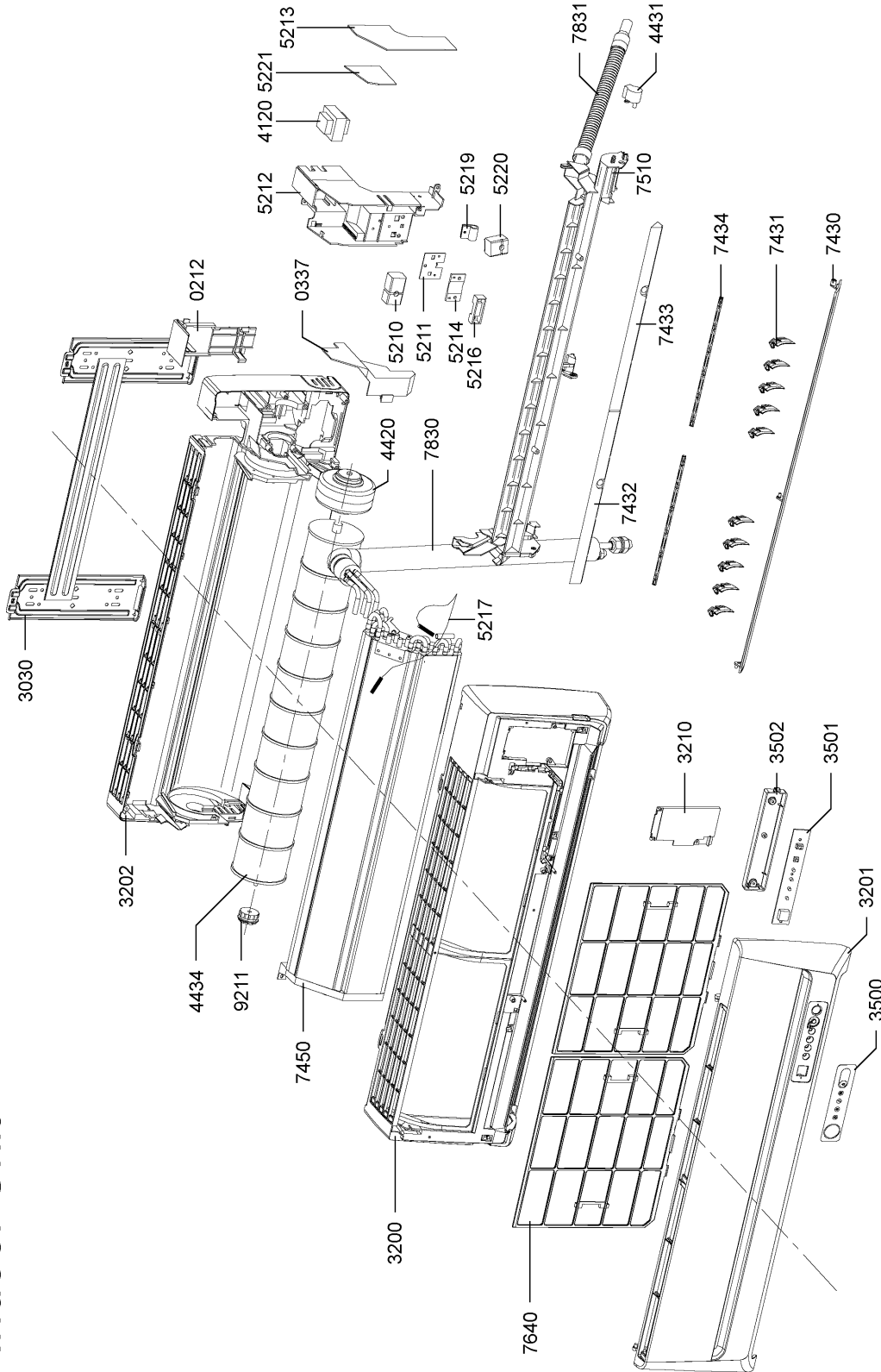
## Spare Part List

Pos	12NC	Description
004 6	<b>4801 501 00107</b>	Support
021 0	<b>4801 501 00108</b>	Grille front
021 1	<b>4801 501 00109</b>	Cover front
021 2	<b>4812 464 48263</b>	Clamp Cabinet
033 0	<b>4801 501 00111</b>	Cover top
033 2	<b>4801 501 00112</b>	Panel right
033 3	<b>4801 501 00175</b>	Base
033 4	<b>4801 501 00114</b>	Grille rear
033 5	<b>4801 501 00115</b>	Panel Insulation
033 7	<b>4812 462 29432</b>	Profiled seal
033 8	<b>4801 501 00116</b>	Cover Valve
034 0	<b>4801 501 00117</b>	Bracket Motor
303 0	<b>4812 404 78948</b>	Bracket
320 0	<b>4801 501 00118</b>	Cabinet
320 1	<b>4801 501 00119</b>	Panel front
320 2	<b>4801 501 00121</b>	Chassis
321 0	<b>4801 501 00122</b>	Plate protect.
350 0	<b>4801 501 00123</b>	Panel Display board
350 1	<b>4801 501 00176</b>	Display PCB
350 2	<b>4801 501 00125</b>	Cover Display board
402 0	<b>4801 501 00177</b>	Compressor
412 0	<b>4812 142 88179</b>	Transformer
420 0	<b>4801 501 00128</b>	Capacitor
420 1	<b>4801 501 00166</b>	Capacitor
420 2	<b>4801 501 00131</b>	Holder Capacitor
440 0	<b>4801 501 00132</b>	Motor Ventilator
442 0	<b>4801 501 00167</b>	Motor Ventilator
443 0	<b>4801 501 00134</b>	Fan wheel
443 1	<b>4812 361 38152</b>	Motor
443 4	<b>4812 515 18037</b>	Fan wheel Indoor
521 0	<b>4801 501 00178</b>	Terminal Board
521 1	<b>4801 501 00179</b>	Support Clamp
521 2	<b>4812 290 88134</b>	Electronic box
521 3	<b>4801 501 00181</b>	Control board
521 4	<b>4812 290 28029</b>	Clamp
521 6	<b>4801 501 00142</b>	Clamp
521 7	<b>4812 210 58094</b>	Sensor
521 8	<b>4801 501 00169</b>	Sensor Outdoor
521 9	<b>4801 501 00145</b>	Clamp
522 0	<b>4812 290 88137</b>	Connector 3PS
522 1	<b>4801 501 00147</b>	Power unit
526 0	<b>4801 501 00148</b>	Electric plate
740 0	<b>4801 501 00182</b>	Condenser
743 0	<b>4801 501 00151</b>	Batten
743 1	<b>4801 501 00152</b>	Deflector
743 2	<b>4801 501 00153</b>	Drain strip
743 3	<b>4801 501 00154</b>	Drain strip
743 4	<b>4812 404 88127</b>	Rail Lever
745 0	<b>4801 501 00183</b>	Evaporator
751 0	<b>4801 501 00156</b>	Drain strip

Pos	12NC	Description
764 0	4812 580 38023	Air clean filt.
781 0	4801 501 00157	Valve 2-way
781 1	4801 501 00172	Coil Valve
781 2	4801 501 00184	Valve 4-way
781 5	4801 501 00185	Capillary tube
781 9	4801 501 00162	Support Valve
782 0	4801 501 00163	Valve 3-way
783 0	4801 501 00164	Pipe
783 1	4812 530 08019	Drainpipe
921 1	4812 520 48017	Bearing
993 0	4801 501 00216	Remote control

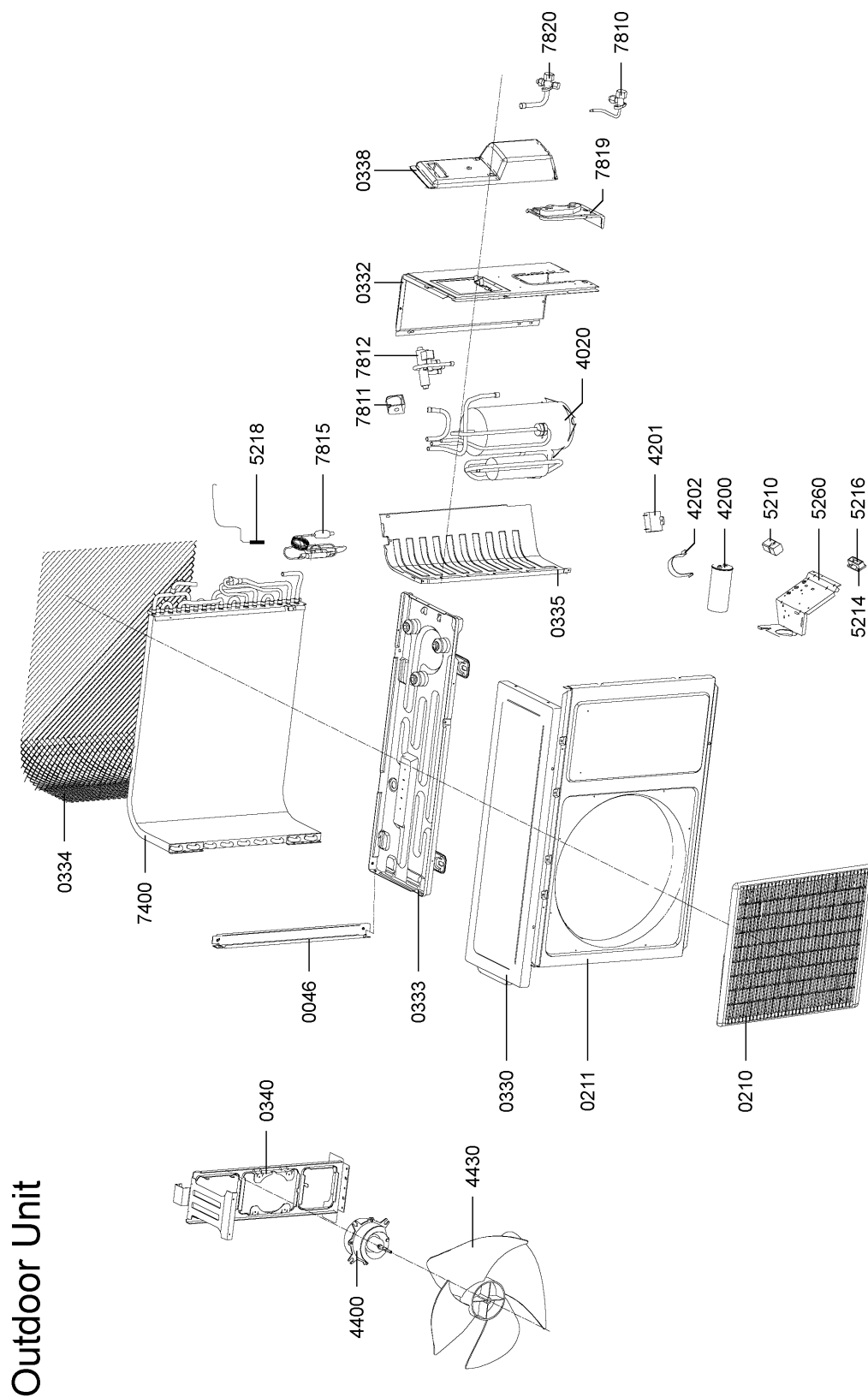
## Exploded View

### Indoor Unit



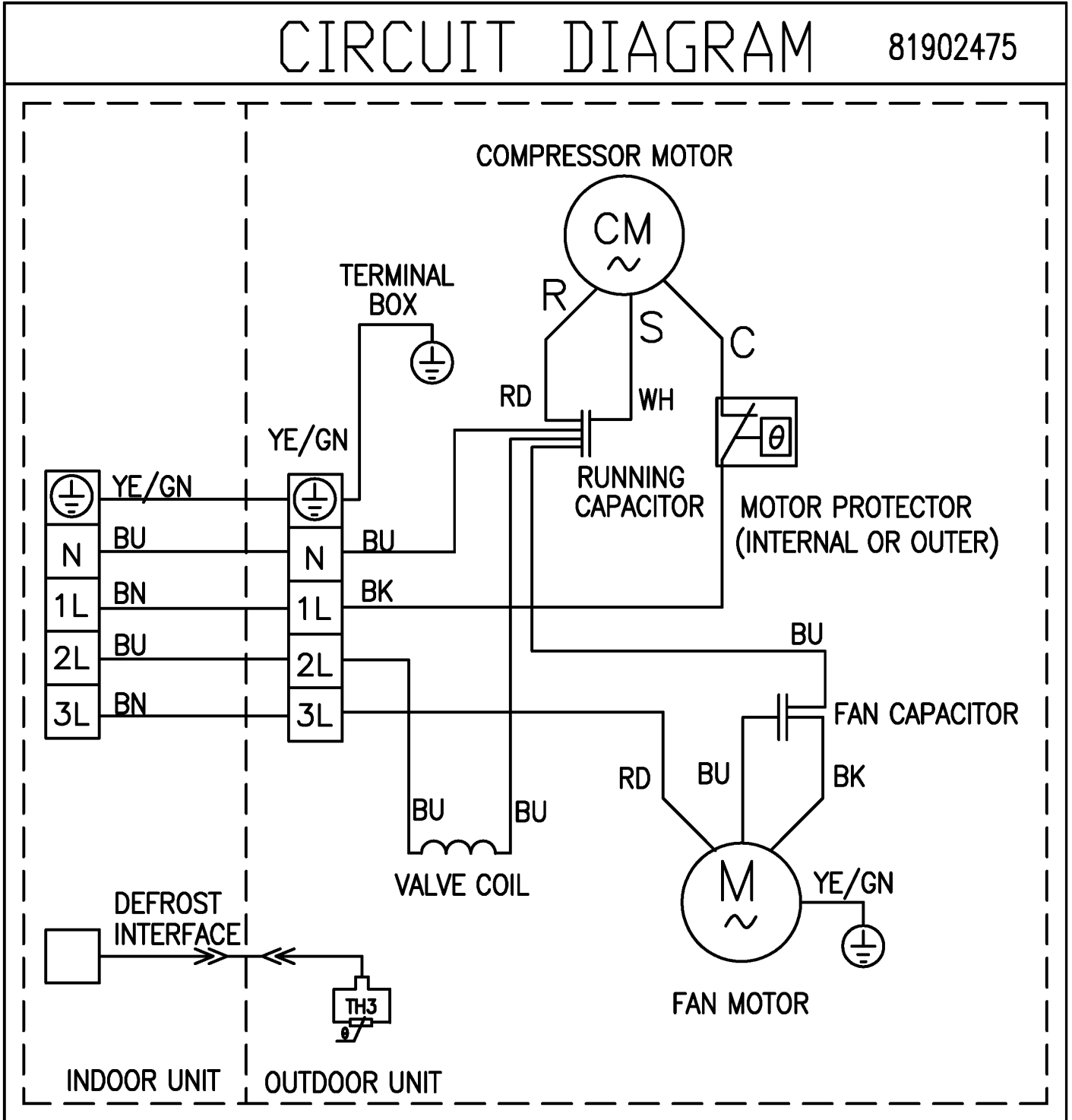
06000229

## Exploded View



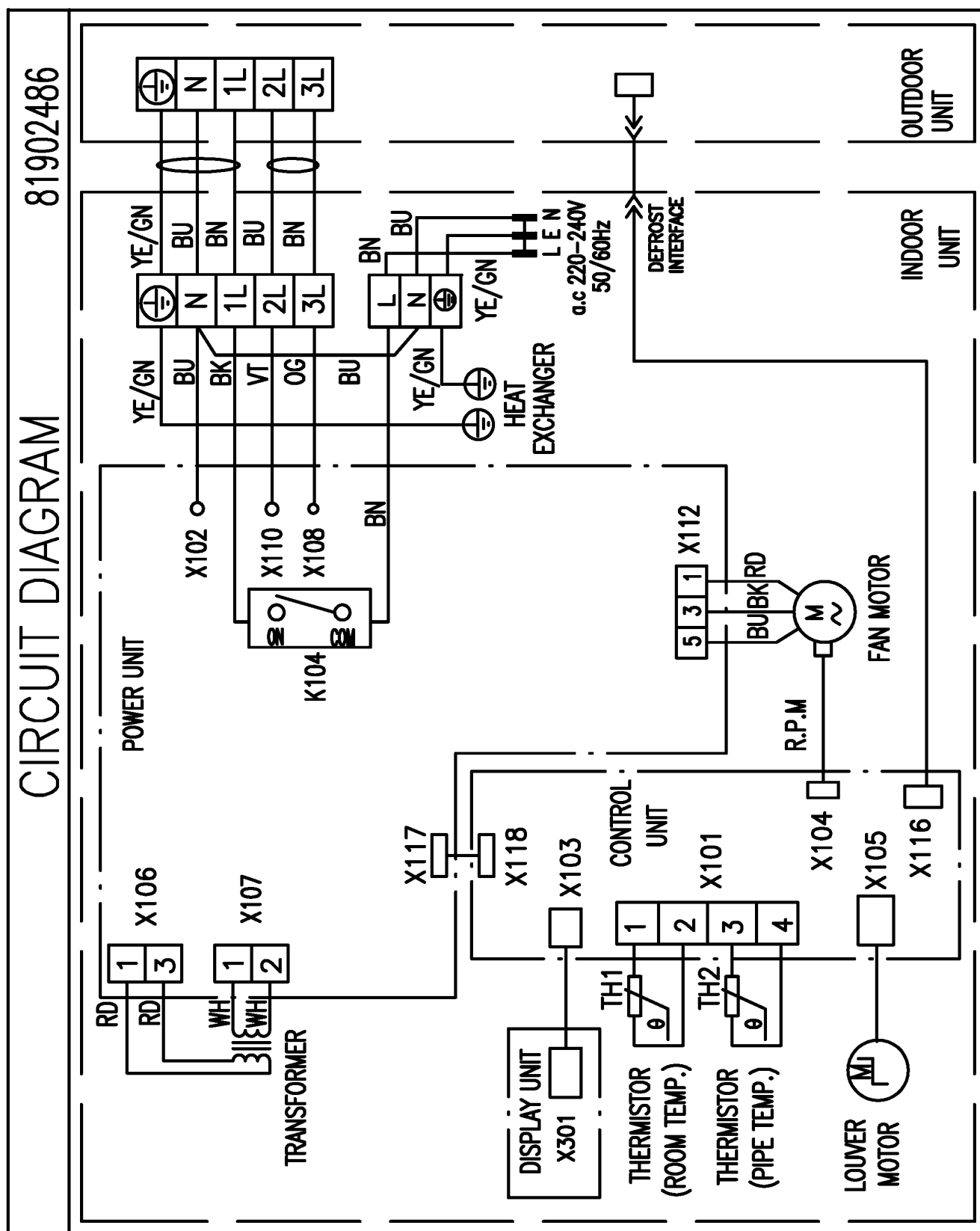
06000235

## Circuit Diagram



06000219

## Circuit Diagram



06000220

## Technical Data

### Factory Code

.....AS-12HR4SVCUV

### Operation type

Cooling / Heating

### Dimensions + Weight

Indoor-unit	
Height .....	240 mm
Width .....	770 mm
Depth .....	179 mm
Outdoor-unit	
Height .....	482 mm
Width .....	804 mm
Depth .....	240 mm
Weight	
Indoor-unit .....	8 kg/net
Outdoor-unit .....	26 kg/net

### Capacity

Cooling .....	3429 W, 11700 BTU/h
Heating .....	3605 W, 12300 BTU/h

### Electrical base data

Voltage .....	220 V - 240 V
Frequency .....	50 Hz

### Rated current

Cooling .....	5.05 A
Heating .....	5.48 A

### Energy Class

Cooling .....	A
Heating .....	D

### Energy Efficiency Rate

Cooling .....	10.96 BTU/Wh
Heating .....	11.61 BTU/Wh

### Refrigerant

Type .....	R 410 A
Quantity .....	1000 g



**Dehumidifying Capacity**

..... 1.5 l/h

**Airflow / Evaporator Airvolume**MAX ..... 315 m<sup>3</sup>/h - 450 m<sup>3</sup>/h**Noise level**

Indoor-unit ..... 33 dB(A) - 37 dB(A)

Outdoor-unit ..... 52 dB(A)

**Tubing diameter**

Liquid line ..... 1/4 dia(inch)

Suction line ..... 1/2 dia(inch)

## Error Codes

<b>Error Code</b>	<b>For products</b>	<b>Meaning</b>	<b>How to deal with?</b>
E2	7K,9K,12K,18K,24K,f or all On/off series including dual splits AMD016 017 036 037	When the evaporator pipe temperature is higher than 63 degree C, "E2" will display on the panel.	When "E2" displays on the panel, do not worry about it. The unit will stop and restart after the pipe temperature lower than 49 degree C.
E4	only for 7K,9K,12K models with special fan motor runing at the speed controled by programm.The other models(18k 24k) have no this code.	When the indoor fan speed is lower than 200 rpm, "E4" will display on the panel.	When "E4" display on the panel, you should check if there are something block the indoor fan or the fan motor's terminals connect with PCB steadily. Otherwise you should change a new fan motor.
EA	VE UV panels double CMOS chips(including all products of global slit project)	Communication fault, only apply to global split project. (Non double CMOS chips design has this errow code.)	When "EA" display on the panel, check the display board wiring connection, or change the display board directly.

06000239en